

Conext TL three-phase grid-tie inverters

Ideal solution for commercial buildings, carports and decentralised power plants

The new Conext™ TL 8, 10, 15 kW and TL 20 kW grid-tie solar inverters are suited for outdoor use and are the ideal solution for commercial buildings, carports and decentralised PV plants up to the MW range. The inverters provide dual MPPT (Maximum Power Point) trackers with a wide voltage range, peak efficiency of greater than 98% for fast ROI. The embedded Modbus communication card allows connectivity with a large range of Schneider Electric products, as well as the option to easily add third party monitoring solutions. Backed by Schneider Electric's global service infrastructure and its expertise in energy management, the Conext TL series are the inverters you can trust for quality and reliability.

Why choose Conext TL?



True bankability

- Warranty from a trusted partner with over 177 years of experience
- World leader in industrial power drives, UPS and electrical distribution
- Strong service infrastructure worldwide to support your global needs



Higher return on investment

- High conversion efficiency: >98% peak efficiency
- Broad operating range to harvest more energy (early mornings and late afternoons)
- Higher ROI with dual MPPT
- Great value for money: DC switch, AC connectors and RS485 ports are included



Designed for reliability

- Robust design through rigorous Multiple Environmental Over Stress Testing (MEOST) and Temperature Humidity Bias (THB)
- IP65 compliant rugged, completely sealed unit to stand the harshest environmental conditions
- Design and qualified for applications in tropical environments through conformal coating and salt fog testing



Flexible

- Wide MPPT voltage range (350 - 850 V)
- Modular system designs using a combination of models
- Easy to connect to third party monitoring solutions



Easy to service

- Easily replaceable fan block and communications card
- Integrated DC switch
- Ability to remotely disable



Easy to install

- Easy and fast mounting with included bracket
- Pluggable AC and DC Connectors (MC4)
- Auto country/multilingual configurations



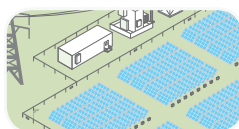
Available in
15 and 20 kW

Available in
8 and 10 kW

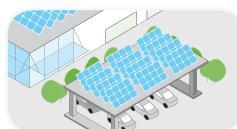
Product applications



Commercial buildings



Decentralised PV plants



Carports

Device short name	TL 8000 E	TL10000 E	TL 15000 E	TL 20000 E
Electrical specifications				
Input (DC)				
MPPT voltage range, full power	350 - 850 V	350 - 850 V	350 - 800 V	350 - 800 V
Operating voltage range	200 - 1000 V	200 - 1000 V	200 - 1000 V	200 - 1000 V
Starting voltage	200 V	200 V	200 V	200 V
Max. input voltage, open circuit	1000 V	1000 V	1000 V	1000 V
Number of MPPT	2	2	2	2
Max. input current per MPPT	17 A	17 A	23 A	30 A
Max. short circuit current per MPPT	24 A	24 A	30 A	30 A
Nominal input power for max. output	8.3 kW	10.4 kW	17.0 kW	22.0 kW
Max. DC input power per MPPT	5.5 kW	7.0 kW	8.5 kW	11.0 kW
DC connection type	MC4, 4 pairs (2+2)	MC4, 4 pairs (2+2)	MC4, 4 pairs (2+2)	MC4, 4 pairs (2+2)
DC switch	Integrated	Integrated	Integrated	Integrated
Output (AC)				
Nominal output power	8 kVA	10 kVA	15 kVA	20 kVA
Nominal output voltage	230 / 400 V, three-phase	230 / 400 V, three-phase	230 / 400 V, three-phase	230 / 400 V, three-phase
Isolation	Transformerless	Transformerless	Transformerless	Transformerless
AC voltage range	184 - 276 V	184 - 276 V	184 - 276 V	184 - 276 V
Frequency	50 / 60 Hz	50 / 60 Hz	50 / 60 Hz	50 / 60 Hz
Frequency range	50 / 60 +/- 3 Hz	50 / 60 +/- 3 Hz	50 / 60 +/- 3 Hz	50 / 60 +/- 3 Hz
Max. output current	12.8 A	16.0 A	24.0 A	32.0 A
Total harmonic distortion	< 3 %	< 3 %	< 3 %	< 3 %
Power factor (adjustable)	0.8 lead to 0.8 lag	0.8 lead to 0.8 lag	0.8 lead to 0.8 lag	0.8 lead to 0.8 lag
AC connection type	IP67 connector	IP67 connector	IP67 connector	IP67 connector
Efficiency				
Peak	98.2 %	98.3 %	98.0%	98.0 %
European	97.4 %	97.7 %	97.3 %	97.5 %
General specifications				
Power consumption, night time	< 2 W	< 2 W	< 2 W	< 2 W
IP degree of protection	IP65 (electronics), IP55 (balance)	IP65 (electronics), IP55 (balance)	IP65 (electronics), IP55 (balance)	IP65 (electronics), IP55 (balance)
Cooling	Fan cooled	Fan cooled	Fan cooled	Fan cooled
Enclosure material	Aluminium	Aluminium	Aluminium	Aluminium
Product weight	41.0 kg (90.2 lb)	41.0 kg (90.2 lb)	67.2 kg (148.2 lb)	67.2 kg (148.2 lb)
Shipping weight	48.5 kg (106.9 lb)	48.5 kg (106.9 lb)	122.0 kg (269.0 lb)	122.0 kg (269.0 lb)
Product dimensions (H x W x D)	62.5 x 61.2 x 27.8 cm (24.6 x 24.0 x 10.9 in)	62.5 x 61.2 x 27.8 cm (24.6 x 24.0 x 10.9 in)	96.0 x 61.2 x 27.8 cm (37.8 x 24.1 x 10.9 in)	96.0 x 61.2 x 27.8 cm (37.8 x 24.1 x 10.9 in)
Shipping dimensions (H x W x D)	75.0 x 74.0 x 40.0 cm (29.5 x 29.1 x 15.8 in)	75.0 x 74.0 x 40.0 cm (29.5 x 29.1 x 15.8 in)	115.0 x 79.0 x 48.0 cm (45.3 x 31.1 x 18.9 in)	115.0 x 79.0 x 48.0 cm (45.3 x 31.1 x 18.9 in)
Ambient air temperature for operation	-20 to 60°C (-4°F to 140°F)	-20 to 60°C (-4°F to 140°F)	-20 to 60°C (-4°F to 140°F)**	-20 to 60°C (-4°F to 140°F)**
Operating altitude	Up to 2000 m	Up to 2000 m	Up to 2000 m	Up to 2000 m
Relative humidity	4 - 100 % (condensing)	4 - 100 % (condensing)	4 - 100 % (condensing)	4 - 100 % (condensing)
Noise emission (at 1 m distance)	< 50 dBA	< 50 dBA	< 55 dBA	< 55 dBA
Features and options				
Embedded data logger	365 days			
Display	5" Graphic LCD (320 x 240 pixels), 4 buttons			
Communication interface	Modbus (RS485)			
Multifunction relay	Yes			
Warranty in years (standard/optional)	5 / 10			
Regulatory approval				
Electrical safety	CE marked for the Low Voltage Directive EN / IEC 62109-1 / EN / IEC 62109-2 AS3100 (Australia / Israel***)			
Grid interconnection*	BDEW***, VDE0126-1-1, VDE-AR-N 4105, RD1663, RD661, RD1699, ENEL-Guida***, CEI 0-21, A70, G59/2***, UTE C15-712-1, AS4777/SI4777***, PO12.3***, IEC 62116***, IEC 61727***			
Environmental	RoHS, REACH			
EMC	CE marked for the EMC directive 2004-108-EC Emissions: EN 61000-6-3 (residential) Immunity: EN 61000-6-2 (industrial)			
Available product variants				
Standard	PVSNVC8000	PVSNVC10000	PVSNVC15000	PVSNVC20000

Specifications are subject to change without notice. *More available upon request. **-15°C cold start temperature. V_{pv} ≥ 500V. ***Only for TL 15000 E and TL 20000 E.